



Proudly part of the  
Aberfoyle Park Primary  
School Campus.

# THIELE PRIMARY SCHOOL NEWSLETTER

2 Campus Drive, Aberfoyle Park SA 5159  
Ph: 8270 4222 Fax: 8270 4773  
ABSENTEE LINE: 8270 4222  
School SMS Number: **0416 906 283**

Principal: Mr Shaun Coghlan  
Deputy Principal: Mrs Sharon Willoughby  
Coordinator Student Wellbeing & Engagement: Carly Nash

Web Page: <http://www.thieleps.sa.edu.au>  
Email Address: dl.1664\_info@schools.sa.edu.au

**MARCH 10, 2016**

**Newsletter No 4**

## TERM 1, 2016 DIARY DATES:

### Week 6

**Friday March 11**

Assembly 12.00pm PAC

### Week 7

**Monday March 14**

ADELAIDE CUP PUBLIC HOLIDAY

**Tues March 15 –**

**Friday March 18**

Year 6/7 Aquatics

**Wednesday March 16**

7.00 pm - Campus Fair Meeting

### Week 8

**Monday March 21**

7.00 pm – Campus Conference

**Tuesday March 22**

6.30 pm – Finance Meeting

7.30 pm – Governing Council Meeting

**Wednesday March 23**

7.00 pm - Campus Fair Meeting

**Friday March 25**

GOOD FRIDAY

### Week 9

**Monday March 28**

EASTER MONDAY

**Friday April 1**

SPORTS DAY

### Week 10

**Mon April 4 – Friday April 8**

R - 5 Swimming

### Week 11

**Sunday April 10**

CAMPUS FAIR

**Monday April 11**

SCHOOL CLOSURE DAY

**Friday April 15**

End of Term 1

Early dismissal 2.00pm



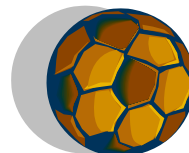
Government of South Australia  
Department for Education and  
Child Development

## From the Principal

Dear Parents / Caregivers,

During weeks 8, 9 & 10 of this term we will be holding **parent - teacher interviews**. It is our expectation that all families make a time to meet with their child's teacher to hear about their child's learning progress so far this year. This year we are introducing a new interview booking procedure which can be done online via a website called school interviews. This will enable parents to make a booking with the relevant teacher and to know straight away what that time will be. For families that do not have internet access, bookings will be able to be made at the school. A letter explaining the new booking procedures will be sent home next week.

Our annual Campus Sports Day is being held on Friday April 1. Team captains have been selected, running trials have been held and all is in readiness for a great day. On the day our canteen will be selling pre-ordered barbecue sausages. Order forms will be sent home in the near future. It would be great to see many family members and friends come along and support your favourite team. In case you have forgotten, our four sports teams are:



TEAM	COLOUR	NAMED AFTER
<b>EYRE</b>	Yellow	Eyre Peninsula
<b>FLINDERS</b>	Red	Flinders Ranges
<b>MURRAY</b>	Blue	The Murray River
<b>YORKE</b>	Green	Yorke Peninsula



Later this term on Sunday April 10, our Campus Community Fair is once again being held. The Campus Fair Committee under the guidance of Juliet Craker have put in many hours of planning for this biennial event. The purpose of the fair is to bring our Campus Community together and help raise funds for our Campus but also to have a good time on the day.

So if you haven't already done so, put this date in your diary and come along to the fair and support your school and Campus. Don't forget to bring other relatives and friends to join in the fun. The money raised from this fair will go towards upgrading our Campus library. We are also still looking for parent volunteers to help for a while on the day. A letter from the parent liaison committee requesting assistance will be sent home shortly next week.

Cheers  
Shaun

## NOTES SENT HOME



Over the past fortnight the following notices have been sent home.

- Student Safety (emailed)
- Campus Fair Newsletter (emailed)

If you have not received any of the above, please request a copy either from your child's class teacher or Thiele Reception.

## JAPANESE NEWS

# NIHONGO NEWS

Konnichiwa,

Did you know that during Japanese lessons the R/1 classes have been learning / revising common greetings in Japanese? We have learnt how to say good morning, hello, good evening, good night, goodbye and see you tomorrow. Here is a list of the greetings...Please encourage your child to use them at home.

***Ohayo gozaimasu- good morning***

***Konnichiwa- hello***

***Konbanwa- good evening***

***Oyasu minasai- good night***

***Sayonara- goodbye***

***Mata ashita- see you tomorrow.***

Sayonara,  
Alysha Milani



## CAMPUS ADMINISTRATOR

We are pleased to announce that the Campus Administrator role is now on Seek. This is a 17.5 hours per week role that would suit a person looking for a part time role. Please go to [seek.com.au](http://seek.com.au) to look at the description and direct all requests to [info@nativity.catholic.edu.au](mailto:info@nativity.catholic.edu.au).

Applications must be received no later than 4.00pm on Friday 25<sup>th</sup> March 2016.

## BREE'S COLOURING COMPETITION

I will be running a colouring in competition for the next two weeks.

The ages are Reception - Year 3 and Year 4-Year 7

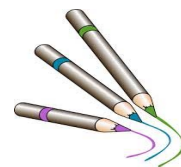
The winners of each age group will receive a framed picture of their design, a copy of their design displayed in the office and a block of chocolate.

Competition closes 18th March

If you have any questions feel free to contact me via Thiele front office.

Happy colouring !!!

Thank you  
Bree Johnston  
Pastoral Care Worker



## FINANCE NEWS

Reminder – the 2016 Material & Service Fees have been sent home to all families. Thank you to all of those that have made payments, contacted the school or completed a school card form.

**PLEASE NOTE THAT THE FINAL DUE DATE FOR PAYMENT IS WEDNESDAY APRIL 13 2016.**

If you are unable to pay by the due date please contact Jo Hicks 8270 4222 or email: [jo.hicks915@schools.sa.edu.au](mailto:jo.hicks915@schools.sa.edu.au). Payment Instalment Plans are available. If you are eligible for School Card please complete a 2016 School Card application form available from the Thiele front office (Please Note: previous years school card applications do not cover you for this year. A new school card application form must be completed annually). Payments can be made by cash, cheque – made payable to Thiele PS, Credit card – in person or over the phone or EFT – please ask Jayne or Jo for bank details.

Also over recent weeks all families would have received invoices for Swimming or Aquatics and our Year 6/7 students for 2016 Canberra Camp along with Campus expenses like Sport, Choir, Instruments etc. Please, if you would like to speak about finance related issues do not hesitate to contact me. I am happy to work with you to ensure all of our students participate and succeed.

## REMINDER



### **MESSAGES TO STUDENTS**

Please arrange travel and other arrangements with your child before they leave home in the morning. Messages to students during the day need to be kept to a minimum.

Messages may not be able to be passed on to your child if received after 1.00pm. We would be very grateful for your help in this matter.

We would appreciate it if arrangements for children attending OSHC are made in the morning prior to school, as it can be difficult to get messages to students when they are moving around the school for lessons.

### **EARLY PICK UPS**

If your child needs to be collected during school hours (e.g. for an appointment) they need to be collected from the classroom or the Front Office. Please come to the front office to sign them out then proceed to the classroom with an Early Departure slip. Children are not allowed to wait at the front of the school or the Drop Off zones during school hours.

### **LATE PICK UPS.**

After 3.30pm there are no teachers on duty. If you are running late to pick up your child please ring the school. All children not collected by 3.30pm will be brought to the office. If we have not heard from you, children may be sent to Out of School Hours Care where a fee will be charged for the student's care.

## CAR PARK

When using the Campus car park please ensure you use the correct entry & exit points for safety reasons. There was a near accident in the car park recently when a car entered via the exit causing the driver of the car exiting the car park to brake heavily to avoid an accident.

There will also be an information sheet and map sent home to families next week that outlines the parking and pick up options for families around Campus.

## SOUTHERN HEIGHTS SAPSASA SWIMMING

On Friday 4<sup>th</sup> March students from The Campus competed in the combined Southern Heights / City South District SAPSASA Swimming Carnival held at the Marion Outdoor Swimming Pool. The students that competed were Georgia O., Amalie V. and Phoebe H. from Thiele; and Alex W., Cooper W., Connor B., Rosie T and Jasmine M. from Nativity. All participants swam very well with many of the competitors winning ribbons for their efforts.

Thank you to the parents who attended the swimming carnival with their children and also to those who assisted with the breaststroke timing.

From this event the Southern Heights swimming team has been selected to compete in the SAPSASA Metro Day being held on March 17<sup>th</sup> at the SA Aquatic & Leisure Centre, Marion. The students that have been selected are Georgia O., Alex W., Cooper W. and Connor B.

Congratulations to these students, and good luck on the day.

Chris Gent  
Campus SAPSASA Rep.

## CAMPUS - CLEAN UP AUSTRALIA

Last Friday students from all of the classes on Campus collected rubbish from around our school yard.

To further develop our skills in Sustainability the teachers worked with their students to sort the rubbish into piles determining what could be recycled and what needed to go into landfill.

As you can see from the phot the students from T16 were highly engaged in this activity. Palmy spent this week in T5 with Mrs Hill's students.





## Campus Car Parking Guidelines

(Please note the following. There is a map attached for further explanation)

### Staff and Visitor Car Park

- This car park is primarily for staff working at the 3 schools and OSHC
- **Parents ARE NOT to park in the car park** unless visiting during the day for a school related issue
- **NO PARENT OR CAREGIVER** should park here at morning drop off (8.20- 8.45am) or after school pick up (3.00- 3.30pm)

### Campus Kiss and Drop

- This is a 2 minute parking area for picking up or dropping off children. **NO PARKING**-drivers **are not to leave their vehicle**
- Parents should drive to the end point and make sure children only exit and enter the vehicle from the passenger side
- If the child is not there to be picked up you are to drive through and exit to Campus Drive then come through the Kiss and Drop Zone again

### Nativity Car Park

- Parents are welcome to park in this car park before and after school.
- Everyone is to use the designated paths and drivers are required to give way to pedestrians at the crossovers.

### Nativity Kiss and Drop Zone

- This is the path leading in front of the church entrance and enters the Nativity car park
- This is a **NO PARKING** area and drivers **are not to leave their vehicle**.

### Thiele and Pilgrim Kiss and Drop

(Top of Campus Drive) This is the same process as the Campus Kiss and Drop.

### Pre School Car Park

- This is strictly for Pre School parents and staff use only. **NO CAMPUS SCHOOL** parents are to park in this car park.

### Please note the following;

- 1) Speed limits with children around Campus streets are 25km/h when children are present.
- 2) Speed limit on site is 5km/h
- 3) No one is to park in the aged care (Estia) Car Park (Private Property)
- 4) Obey parking restrictions and signs around Campus
- 5) Be mindful of the pedestrian crossings on Sunnymead Dr and Campus Dr
- 6) Permits must be displayed to use Access (Disabled) Car Parks.

These guidelines are a joint initiative from the Leaders of the 3 schools. We would expect all families to respect and cooperate with the guidelines.

Campus Leaders

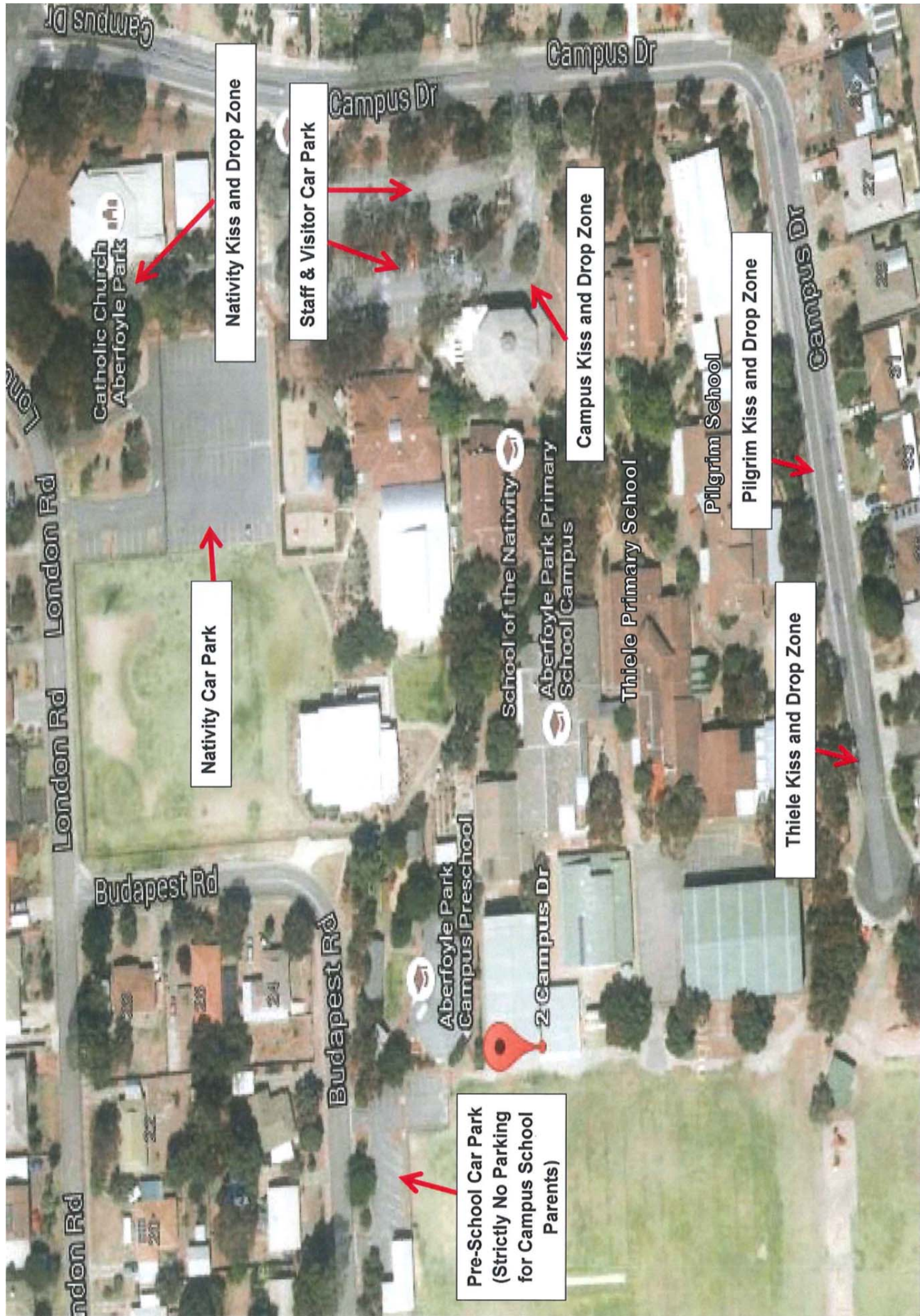
March 15<sup>th</sup>2016

**Aberfoyle Park Primary School Campus**

Pilgrim

Nativity

Thiele



Nativity Kiss and Drop Zone

Staff & Visitor Car Park

Nativity Car Park

Pre-School Car Park  
(Strictly No Parking  
for Campus School  
Parents)

Campus Kiss and Drop Zone

Pilgrim Kiss and Drop Zone

Thiele Kiss and Drop Zone

Catholic Church  
Aberfoyle Park

School of the Nativity

Aberfoyle Park Primary  
School Campus

Thiele Primary School

Pilgrim School

London Rd

Budapest Rd

Budapest Rd

2 Campus Dr

Campus Dr

Campus Dr

Campus Dr

London Rd

Aberfoyle Park  
High School

# OPEN NIGHT

Tuesday  
22<sup>nd</sup> March

Tours will leave  
from the marquee  
every 10 minutes  
between

6.00pm & 7.30pm

Come and meet our great  
students and teachers, be  
inspired by our dynamic  
programs and state of the  
art technology in a school  
where your child is our  
focus.

*I look forward to meeting  
you at Open Night.*

Liz Mead ❖ *Principal*

Taylor's Road

Aberfoyle Park SA 5159

Phone: 08 8270 4455

2  
0  
1  
6  
  
O  
P  
E  
N  
N  
I  
G  
H  
T

# Principal Tours

2016

9.00am – 10.30am

Friday 1<sup>st</sup> April

Wednesday 6<sup>th</sup> April

Thursday 5<sup>th</sup> May

Monday 9<sup>th</sup> May

Friday 20<sup>th</sup> May

Wednesday 25<sup>th</sup> May

Bookings are essential.  
Please phone or email  
to reserve a place.

Come and meet our great  
students and teachers, be  
inspired by our dynamic  
programs and state of the  
art technology in a school  
where your child is our  
focus.

*I look forward to meeting you  
at a tour.*

Liz Mead ❖ *Principal*

Taylor's Road

Aberfoyle Park SA 5159

Phone: 08 8270 4455

A  
B  
E  
R  
F  
O  
Y  
L  
E  
  
P  
A  
R  
K  
  
H  
I  
G  
H  
  
S  
C  
H  
O  
O  
L