

From the Principal

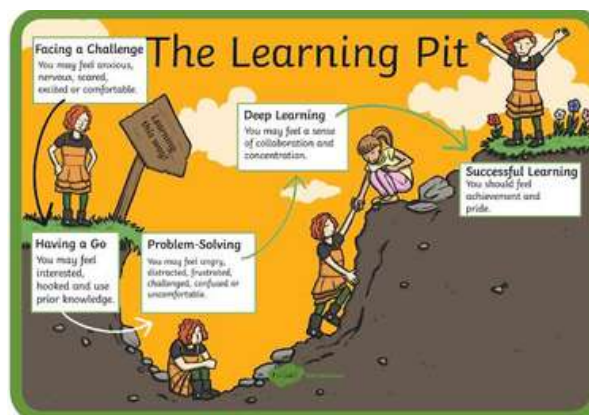
Dear Parents/Carers,

On Monday a group of Year 5/6 students participated in an online workshop hosted by the Department for Education Chief Executive, Martin Westwell and facilitated by the visiting Professor of Education, King's College London, Guy Claxton. The reason of the online workshop was for students to discuss the purpose of public education in South Australia to help deepen understanding of learner agency in our schools. This workshop demonstrated how student voice can be used to shape and further understand learner agency and how this could be developed our schools. This workshop continued the discussions from the forum that some of our students participated in last November which provided the basis for the new [strategy for public education in South Australia](#). Unfortunately, the session with Guy Claxton on empowering effective learners that Lisa and I were going to attend last Wednesday was cancelled.

A summary of the questions and responses from Monday's session included:

Questions	Student responses
What are you busy learning about, out of school at the moment?	Sports, learning, languages, leadership, cooking, driving, gardening, music.
What key messages did you hear from Martin and Guy about 'mistakes' in learning?	Mistakes, try, costly, success, learning, smart, friend, fear.
Who do you know who is a great learner? What do they do to get out of the learning pit?	Reflection, perseverance, asking for help, curiosity, positive self-talk, trying new methods, practice resilience, trial and error, open mindedness.

Our students were extremely interested in the Learning Pit and felt that this would be something very useful to explore in more detail within our school. The Learning Pit encourages learners to use multiple ideas, think critically and creatively, and develop a growth mindset.



Our new Reception students have completed their first transition visit and we are looking forward to seeing them again in the next three weeks.

To support us with planning for 2024 classes, if your child or a child you know turns 5 next year, if you know families who are moving in to the area or if your child will not be attending Thiele Primary School in 2024 please email Renata.Brook241@schools.sa.edu.au or contact Renata at our Front Office, 8270 4222.

Kind regards,

Sharon Willoughby

Principal



CAMPUS
Nativity • Pilgrim • Thiele

CHRISTMAS RAFFLE

RAFFLE TICKETS AVAILABLE
FOR PURCHASE ONLINE
VIA THE QKR! APP FOR \$1 EACH.

SALES CLOSE WEDNESDAY 22ND NOV

THIELE PRIMARY SCHOOL

Thiele News



SRC

Thank you for the kind donations of socks and non-perishable foods on our casual day last term. These have now been donated to Amanda Rishworth to distribute to people who need them most. We appreciate the generosity of our families in supporting both of these events.

LEARNING AND CELEBRATING RECONCILIATION

Students and staff are continuing their work with Simon to create an Acknowledgement of Country for Thiele.

Our next RAP parent/carer meeting with Simon Wilson is on Friday, December 15th (last day of the school year) at 9:00am in T8. We look forward to seeing you there. All parents/carers are welcome to attend.



YELP - YOUTH ENVIRONMENT LEADERS PROGRAM

Our Youth Environment students have been busy making compost for our garden. We are so excited to share our first batch of compost with you and our plants.

TOYS AT SCHOOL

We are seeing an increase in the amount of toys being brought to school from home. It is not recommended that students bring toys to school as this causes distraction from their learning and students becoming upset in the event of toys being lost, broken or misplaced. We appreciate your support, by communicating with your child's teacher if there is a need for your child to bring a toy to school.



Assembly Awards

We would like to congratulate all of our students who received awards at the Week 4 Assembly last Friday 10th November. Keep up the great work everyone.

PRINCIPAL AWARDS

T1 - Grace T, Archie M
T3 - Luke T, Kingston B
T15 - Jace B, Olyvia L
T16 - Cheyenne T, Odin B, Libby B

RANDOM ACTS OF KINDNESS

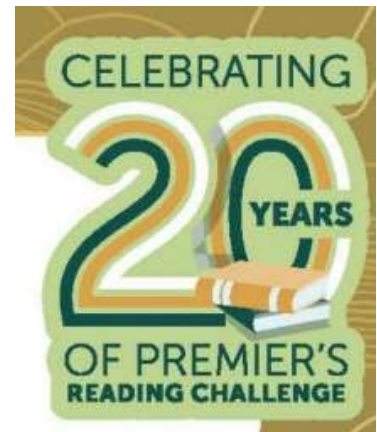
Winner: Lenny W (T5)

RUBBISH RAFFLE

Winner: Unfortunately, the rubbish raffle was not drawn at this assembly.
Students received a canteen voucher for winning the rubbish raffle.

PREMIER'S READING CHALLENGE

Congratulations to all of the students who participated in the South Australian Premier's Reading Challenge this year. Teachers and staff were thrilled with the number of students involved in this year's Challenge. The Challenge requires students to read 12 books between the beginning of the school year and early September. To celebrate 20 years of the Challenge, students who read 20 books will receive a 20th Anniversary certificate in addition to their usual PRC award this year.



CLASSROOM AWARDS

Bare Food Award T1

Congratulations to T1 for having the most Bare Food lunches which contain no wrappings, packaging or litter. Our Youth Environment Leader's Challenge to you is to pack a Bare Food lunchbox every day!

Mr G-no-me Award T3

Mr G-no-me likes to spend his time in the class that takes care in keeping their yard area clean and tidy. This supports our school value of integrity. **Congratulations to T3** who have been successful in earning Mr G-no-me for the next fortnight.

Palmy Award T1

Palmy is an orangutan who enjoys spending his time with the class who recycles the most recyclable 10c containers because this supports our school value of sustainability. **Congratulations to T1** who collected the most recyclable containers and won the opportunity to have Palmy in the classroom for the following two weeks.

FOR MORE VISIT: thieleps.sa.edu.au

Thiele Updates



CAMPUS CANTEEN

The Campus Canteen Menu is available [here](#).

Don't forget the special meal days: Wednesday and Thursday - PIZZA special. Friday - SUSHI special

CAMPUS COMMUNITY GARDEN

Thank you to the parents and carers who purchased fresh oranges and lemons from our garden this week. All proceeds will go back into our garden. If you are interested in volunteering within the Community Garden or have any seedling donations, please contact the Front Office.

CAMPUS KIDS PLAY CAFE

Campus Kids Play Café is open every Friday of term in the Geoff Simpson Hall. Come along and meet Lois, enjoy a cappuccino or fresh brewed tea with some delicious morning tea. We welcome parents/carers within our three schools, along with their friends, family and community members.

SUN SMART SCHOOL

Hats are compulsory in Terms 1, 3 and 4. All students are required to wear a wide brimmed or legionnaires hat. Students who do not have a wide brimmed or legionnaires hat will be required to follow our "No Hat, No Play" policy. If students are not wearing their hat during recess and lunch, they are to sit in the area near the Coorong building. Hats and beanies are not to be worn in classrooms.

FUNDRAISING COMMITTEE

We are seeking new members for our fundraising committee. If you are interested in joining the committee, please email dl.1664.info@schools.sa.edu.au. Committee members assist with local donations, festive stalls and raffle prize organisation.

UPDATED POLICIES

We have updated the Dress Code Policy and Mobile Phone and Personal Device Policy for Thiele Primary School. Please click [here](#) to view. We appreciate your continued compliance with these policies.

NEW UNIFORM SUPPLIER

Belgravia Apparel, our new supplier, have opened their onsite shop. Opening hours are Monday 2.30pm – 3.30pm; Wednesday 8.30am – 9.30am; Friday 8.30am – 9.30am..

SECOND-HAND UNIFORM SHOP

Thiele's Second-hand Uniform Shop is open Thursday mornings from 8:45am. The shop is located next to the Junior Primary Science room in the Heysen Building. Cash payments are preferred please.

THE CAMPUS WAY

Respect others | Respect yourself | Respect our place | Sitting while eating | Walking on pavers
Keeping out of garden areas | Courtyard/grass area is a quiet play space | No hat, No play
Being a Nude Food Dude and bringing litter free lunch

Pedal Prix News

Campus Tornadoes
Pedal Prix
Come and Try



CAMPUS
Nativity • Pilgrim • Thiele

CAMPUS TORNADOES



Sunday 3rd December - 3:00pm to 6:00pm

Nativity Carpark off London Road

For students currently in Year 4, 5 and 6 - Please bring your own Helmet

CAMPUS TORNADOES



Thank you to the sponsors of our Pedal Prix Team:-

Go Sunny Solar:- mention Campus Tornadoes Pedal Prix for a special price on solar

Air Diffusion:- mention Campus Tornadoes Pedal Prix to Bill Threadgold at Air Diffusion for any insulation or air conditioning needs

Scallywags Coffee:- enjoy a cup of coffee at Canberra Drive, Aberfoyle Park

NJD Book Keeping, Jayco, Ryco, Real Good Design, Diverse Water Solutions, Snap Printing Lonsdale.

Campus Events

PEDAL PRIX

School DISCO

in the Campus gym

FRI 17 NOV 2023

**REC/F- YR 3 5:00PM TO 6.30PM
FAMILY BBQ 6:15PM-7:15PM
YR3-6 7:00PM - 8:30PM**

**TICKETS \$5
SAUSAGES \$2**

**PRE BOOK ONLY THROUGH TRY BOOKING
[HTTPS://WWW.TRYBOOKING.COM/CMXTH](https://www.trybooking.com/cmXTH)**

**GLOW STICKS & LOLLIES AVAILABLE
TO PURCHASE FOR \$1**

BYO DRINK BOTTLES (WATER ONLY)

BOOKINGS CLOSE WED 15 NOV @ 10AM

PLEASE NOTE PARENTS MUST ATTEND/SUPERVISE CHILDREN AT BBQ

DISCO IS A KISS & DROP LOCK IN EVENT

SUPERVISED BY PEDAL PRIX VOLUNTEERS (ALL HAVE WWCC)

Thiele Events



THIELE PRIMARY SCHOOL

Christmas Stall

THURSDAY 23RD NOVEMBER AND
FRIDAY 24TH NOVEMBER 2023

SPOIL YOUR LOVED ONES AT THE ANNUAL THIELE CHRISTMAS STALL. GIFTS AVAILABLE FROM 50C TO \$5. RAFFLE TICKETS AVAILABLE FOR PURCHASE ONLINE VIA THE QKR! APP FOR \$1 EACH.



THIELE PRIMARY SCHOOL

End of Year Celebration

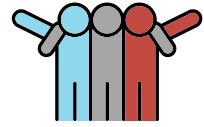
THURSDAY 14TH DECEMBER 2023

CELEBRATION EVENING WILL TAKE PLACE ON THE CAMPUS COLA. ARRIVAL FROM 5PM. BYO FOOD, PICNIC RUG/DECK CHAIR. NO ALCOHOL PERMITTED. JOIN US FOR A 'NUTBUSH FINALE'. WE ARE LOOKING FORWARD TO CELEBRATING WITH YOU.

2023 Thiele Planner



THIELE PRIMARY SCHOOL TERM 4 - 2023



WEEK	MONDAY	TUESDAY	WEDNESDAY	THURSDAY	FRIDAY	SATURDAY	SUNDAY
1	16-OCT FIRST DAY OF TERM 4	17-OCT	18-OCT	19-OCT	20-OCT	21-OCT	22-OCT
2	23-OCT	24-OCT	25-OCT	26-OCT	27-OCT	28-OCT	29-OCT
3	30-OCT	31-OCT	01-NOV	02-NOV	03-NOV	04-NOV	05-NOV
4	06-NOV	07-NOV RECEPTION TRANSITION VISIT 9-10AM GROUP 1	08-NOV	09-NOV RECEPTION TRANSITION VISIT 9-10AM GROUP 2	10-NOV	11-NOV	12-NOV
5	13-NOV	14-NOV RECEPTION TRANSITION VISIT 9-10AM GROUP 1 YEAR 6 JAPANESE DINNER	15-NOV PEDAL PRIX ASSEMBLY YR 4,5,6 T15/T16 THE LORAX	16-NOV RECEPTION TRANSITION VISIT 9-10AM GROUP 2	17-NOV PEDAL PRIX CAMPUS DISCO	18-NOV	19-NOV
6	20-NOV	21-NOV RECEPTION TRANSITION VISIT 9-10AM GROUP 1	22-NOV	23-NOV RECEPTION TRANSITION VISIT 9-10AM GROUP 2 CHRISTMAS STALL	24-NOV CHRISTMAS STALL VOLUNTEER AFTERNOON TEA ASSEMBLY 2:20PM	25-NOV	26-NOV
7	27-NOV	28-NOV RECEPTION TRANSITION VISIT 9-11:30AM BOTH GROUPS	29-NOV YEAR 6 FINAL CAMPUS ASSEMBLY	30-NOV CULTURAL CONNECTIONS BBQ	01-DEC	02-DEC	03-DEC PEDAL PRIX COME AND TRY 3-6PM
8	04-DEC	05-DEC	06-DEC YEAR 6 GRADUATION ASSEMBLY	07-DEC	08-DEC	09-DEC	10-DEC
9	11-DEC	12-DEC YEAR 6 GRADUATION DINNER AND CEREMONY	13-DEC	14-DEC END OF YEAR CELEBRATION EVENING	15-DEC LAST DAY OF TERM 2PM DISMISSAL	16-DEC	17-DEC



FOR MORE VISIT: thieleps.sa.edu.au

Sporting Opportunities



PLAY FOR KICKS

Superkick is next level fun for 8 to 12 year olds who are new to footy, or want to continue to grow their skill levels.

MORPHETT VALE PS
MONDAY NIGHTS 4-5PM
30TH OCTOBER - 4TH DECEMBER

AFL PLAY Superkick



ROYAL LIFE SAVING
SOUTH AUSTRALIA



HOLIDAY SWIM

ENROLMENTS OPEN NOW

Swim and SURVIVE GET IN QUICK! Holiday Swim

WWW.HOLIDAYSWIM.COM.AU



Come and Try CALISTHENICS

Does your child enjoy dancing?
Why not explore the art of Calisthenics!

First 2 sessions free!

Ages: 3-7
When: Saturdays 9am-10am
Where: Reynella East College Gymnasium

Contact: 0438 847 458 or 0430 231 573
Email: rbcalisecretary@gmail.com

www.reynellaes.com.au/reynellaesrecreation/



Join our family friendly, development oriented club!

JUNIOR PLAYERS WANTED!

Aged 8 - 16 as at 1st September 2023!

Interested in playing cricket this year? We are looking for new players to join our club!

Matches are played Sunday morning with occasional matches on Friday evening across the season..

Contact our Junior Director Helen for more information: 0432 200 557 or juniors@coromandelramblers.com.au

Community Information

Welcome the world home



Host an
international
school student

**South Australian
Government Schools**



Government of South Australia
Department for Education



Want to discover the world from a different perspective? Host an international government school student to explore new cultures while receiving a weekly contribution of **\$340.***

Scan for more information



☎ 8226 3402

✉ education.homestay@sa.gov.au

internationalstudents.sa.edu.au/homestays



*(Starting 31/12/23)

Department for Education T/A South Australian Government Schools CRICOS Provider Number: 00018A

Parenting Ideas

Online psychological support for children with big feelings & life challenges



Do you have a child who:

- Worries & gets frustrated
- Has difficulties in making/managing friendships
- Has been through tough life situations
- Might have a mental or emotional health challenge or diagnosis

We can help!



Calm Kid Central

1. Our child psychologists are on standby to help you with unlimited questions about children within 48 hours.



Tell us any question or concern you have about your child. Our panel of experienced & fully qualified child psychologists will carefully read and answer your questions online within 48 hours.



2. We help children learn to cope with big feelings, act confidently, stay calm, cope with friendships & act co-operatively.

Animated videos (and activity sheets & posters) for children on topics such as: Following Tough Instructions, Why We Get Mad and What To Do, Being Brave, Coping with "Mean" Behaviour – & many more:



BEING POSITIVE
about screen
free time



MAKING CONNECTIONS
with friends

3. We teach you to feel calmer, more confident and effectively support kids with "big feelings" & life challenges



Videos, articles and "cheat" sheets to know how to support children with anxiety, frustration, challenges with friendships and psychological disorders.

Click JOIN NOW and use code **FIRSTMONTHFREE** to try one month for free.
After this month: \$28.50 per month or \$177.50 per year
For a limited time use code **TAKE30** to save 30% on a year subscription
(no minimum time commitment, cancel anytime)



calmkidcentral.com

